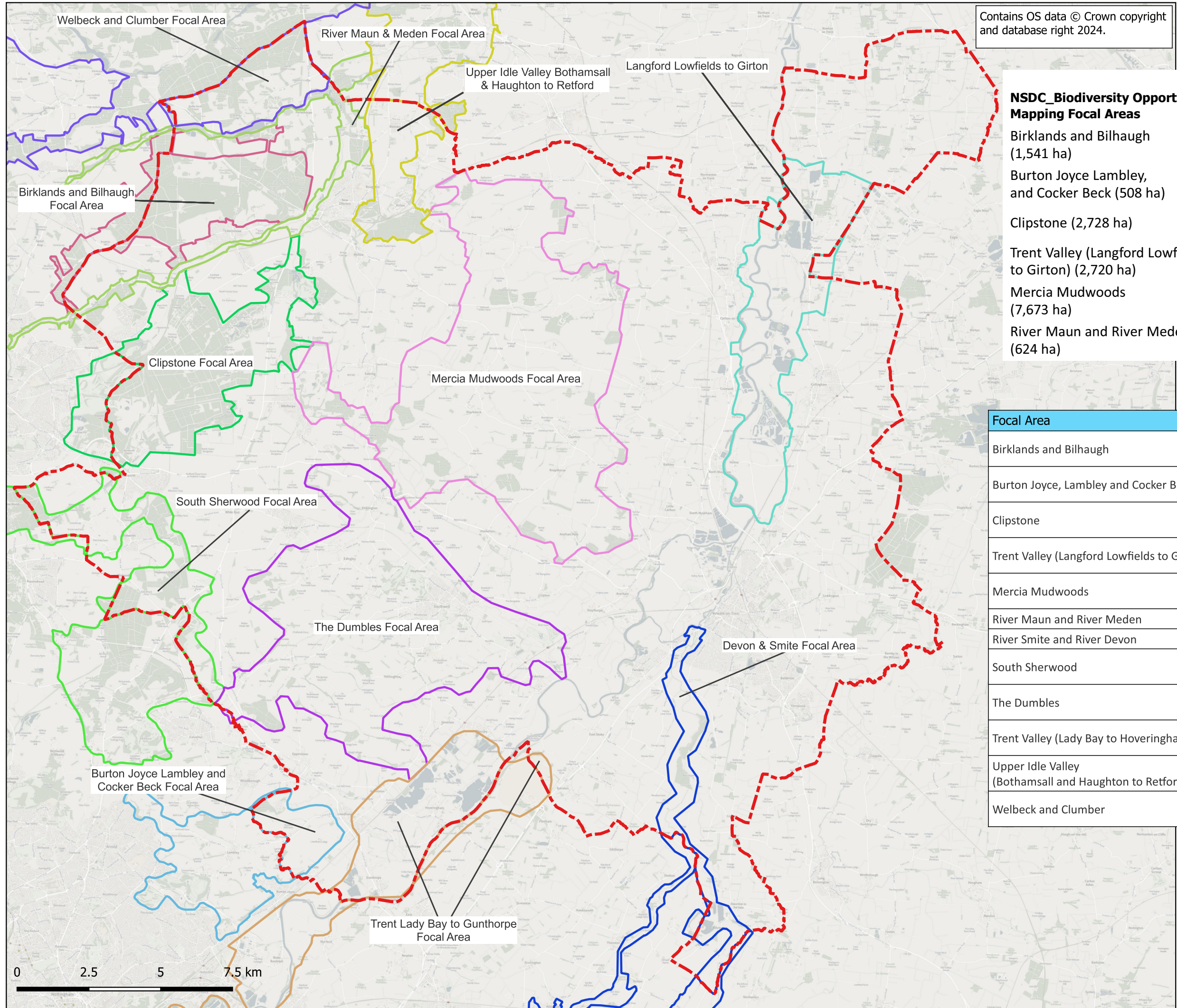


Contains OS data © Crown copyright and database right 2024.



- NSDC Biodiversity Opportunity Mapping Focal Areas**
- Birklands and Bilhaugh (1,541 ha)
  - Burton Joyce Lambley, and Cocker Beck (508 ha)
  - Clipstone (2,728 ha)
  - Trent Valley (Langford Lowfields to Girton) (2,720 ha)
  - Mercia Mudwoods (7,673 ha)
  - River Maun and River Meden (624 ha)

- Newark and Sherwood District**
- River Smite and River Devon (879 ha)
  - South Sherwood (1,385 ha)
  - The Dumbles (6,021 ha)
  - Trent Valley (Lady Bay to Hoveringham) (1,692 ha)
  - Upper Idle Valley (Bothamsall and Haughton to Retford) (894 ha)
  - Welbeck and Clumber (982 ha)

Focal Area	High Strategic Significance Habitats
Birklands and Bilhaugh	Mixed deciduous woodland. Heathland. Acid grassland.
Burton Joyce, Lambley and Cocker Beck	Mixed deciduous woodland. Species-rich neutral grassland.
Clipstone	Mixed deciduous woodland. Heathland. Acid grassland.
Trent Valley (Langford Lowfields to Girton)	Wetland habitats. Species-rich neutral grassland. Heathland. Acid grassland.
Mercia Mudwoods	Mixed deciduous woodland. Species-rich neutral grassland.
River Maun and River Meden	Wetland habitats.
River Smite and River Devon	Mixed deciduous woodland. Wetland habitats.
South Sherwood	Mixed deciduous woodland. Heathland. Acid grassland.
The Dumbles	Mixed deciduous woodland. Species-rich neutral grassland.
Trent Valley (Lady Bay to Hoveringham)	Wetland habitats. Species-rich neutral grassland. Heathland. Acid grassland.
Upper Idle Valley (Bothamsall and Haughton to Retford)	Mixed deciduous woodland. Species-rich neutral grassland. Wetland habitats.
Welbeck and Clumber	Mixed deciduous woodland. Heathland. Acid grassland.

Rev	Date	Comments	Drn.
A	23.11.2023	Initial draft for review	NJL
B	05.01.2024	Labels added	NJL

**Plan Ref. NSDC\_BNG\_SS\_01**  
**Title: Biodiversity Opportunity Focal Areas**

